

Wildland Fires Get Prepared and Stay Safe

Mogul Firewise 2025



1

Wildfires Happen! What Do *We* Do About it?



- Education
 - Understand the basics of how fires spread.
- Get Ready
 - Prepare your home to survive a fire
 - Become a Fire Adapted Community
- Get Set
 - Prepare for the eventuality of a fire
 - What will you do when it happens?
- Go!
 - Have a plan to evacuate safely in the event of a fire



2

The **Biggest** Drivers of **Wildland Fire**



Fire Weather Factors

- Increased Temperatures / Low Relative Humidities
- Dry Lightning
- High Winds

Local Factors

- Downslope Winds in the afternoon
- Extreme “Red Flag” conditions in the Summer
- High wind events in the fall

When should I
Start Paying Attention?



3

Natural Resources and Fire Information Portal
COMMUNITY ASSESSOR

Washoe County
Project Owner: Brett Taylor
Type: Firewise
Status: Open

Created: 04/12/2023
Created By: Adam Crichton

Export: [EXCEL](#) [SHAPEFILE](#)

Associated Communities | Project Members

Project Communities

+ CREATE COMMUNITY | + ADD EXISTING COMMUNITY | + IMPORT COMMUNITIES

Current Project Communities

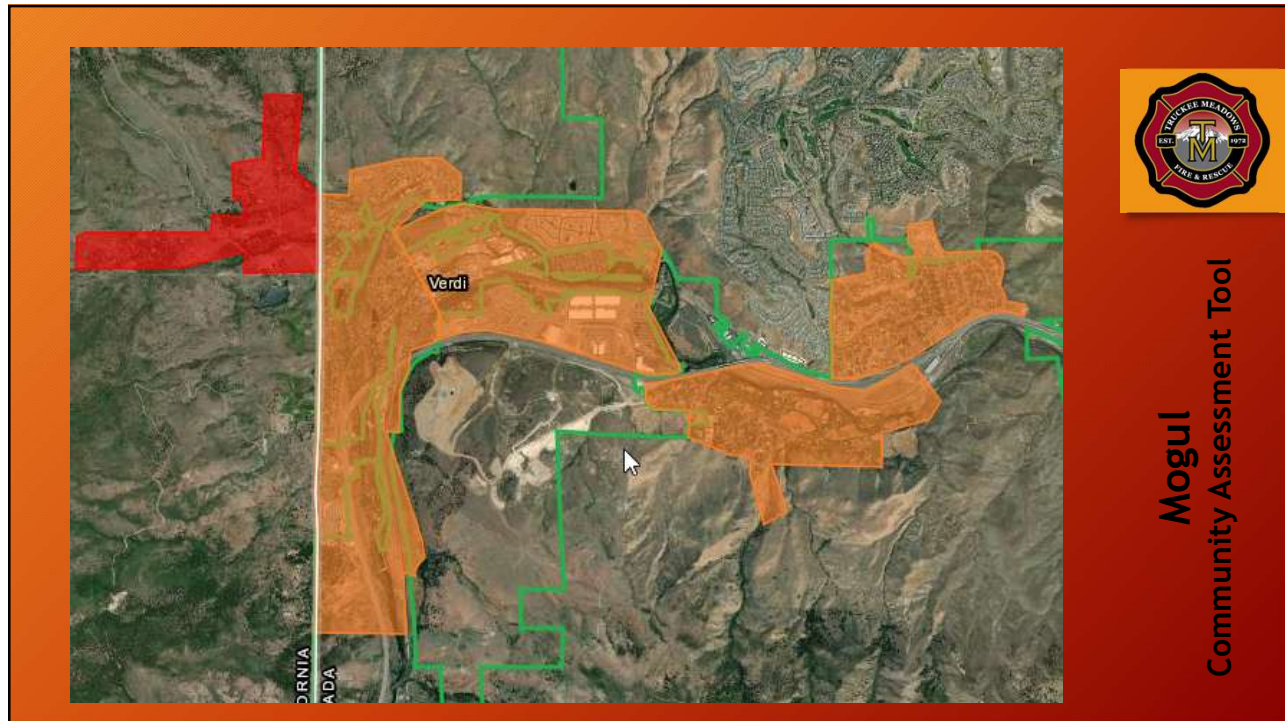
There are currently 5 Communities associated with this project. You may filter communities by name, assessment status, or boundary.

COMMUNITY NAME	ACRES	STATUS	BOUNDARY
California Side Verdi	428.88	Assessed	Yes
Central Verdi	849.65	Assessed	Yes
East Verdi	559.62	Assessed	Yes
Mogul	439.25	Assessed	Yes
West Verdi	1,163.42	Assessed	Yes

Welcome, Brett Taylor
[SIGN OFF](#)

Mogul
Community Assessment Tool

4



5

Get **SET!** – *Preparing to Evacuate*



Create an **Action Plan** for your Household!

- Checklist Can Include:
 - Evacuation plan
 - People and Pets!
 - Inside and Outside To-do List
 - Meeting locations
 - Communications plan

6

Resources to *Keep you Aware!*



Sign up for **Washoe County Alerts** with:

- www.washoecounty.gov/em/RegionalAlerts.php



Become Familiar with **Perimeter**

- <https://perimetermap.com/>



Community Connect

- <https://www.communityconnect.io/info/nv-truckeemeadows>

Stay up to date on **Fire Weather Conditions** and **Local Fire Activity**

- <https://www.weather.gov/wrh/fire?wfo=rev>

7

Get **SET!**



Create an **Emergency Supplies Kit** for a **GO Bag!**

- 3-day food/water supply (1 gallon/person/day, non-perishable foods)
- First Aid Kit and sanitation supplies (toilet paper, baby wipes, etc.)
- Flashlight
- Battery-powered Radio
- Extra batteries
- Extra set of Car Keys, credit cards, cash
- Extra eyeglasses, contact lenses, prescriptions, medications
- Important household documents (Social Security Cards, Birth Certs, Insurance cards, etc.)
- Paper Map paper with evacuation routes
- Easily Carried Irreplaceable Items
- Cell Phones and chargers
- Keep a pair of shoes and flashlight ready at night in case of night evacuation



8

Wildfire Starts...GO!



Follow your **Action Plan**, Consult your **Checklists**, and **Leave Early!**

Inside Checklist

- Close all windows and doors
- Open inside fabric blinds/curtains
- Leave some lights on
- Grab your Go Bag

Outside Checklist (If time allows)

- Make sure combustibles are away from the house
- DON'T leave sprinklers on or water running
- Close your garage door when you leave (Without power?)



Wildland Fire Order Number 6... Be **Alert**, Keep **Calm**, Think **Clearly**, Act **Decisively!**

9

Wildfire Starts...What not to do!



DON'T - Do things that may lead to another fire!

DON'T - Go into a fire area to "See what's happening..."

DON'T - Fly a drone anywhere near a wildland fire!



10

Evacuations



- *Leave Early - Don't wait!*
- Follow the directions of the *Emergency Management*
- *Watch out* for First Responders on roadways
- Find your *Evacuation Shelter* and *Relief Services*
- If you become trapped or require additional help, **CALL 911!**

Post Fire

- *Stay away until directed to return!*



11

TMFPD Resources



Greenwaste Days

- Every Spring and Fall

Curbside Chipping

- Limited to the elderly and disabled

Open Burning

- During the months of December and March

Firewise Workdays ...



12

Thank you and Questions!



Contact: Brett Taylor, WUI Community Coordinator
Email: btaylor@tmfpd.us
Cell: (775) 722-8992